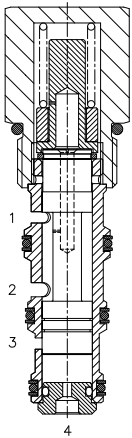


DG-TCB PRESSURE COMPENSATING VALVE, RESTRICTIVE TYPE WITH BYPASS



DESCRIPTION

10 size, 7/8-14 thread, "Delta" series, pressure compensating valve, restrictive type with bypass.

OPERATION

The DG-TCB allows pressure compensated or proportional flow from (1) to (2) regulated by the pressure differential across (1) and (4) with a bypass of (4) to (3). The spring chamber is constantly connected at (1).

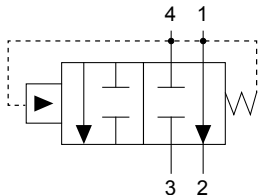
FEATURES

- Hardened parts for longer life.
- Industry common cavity.



Bypass line (3) can be pressurized.

HYDRAULIC SYMBOL



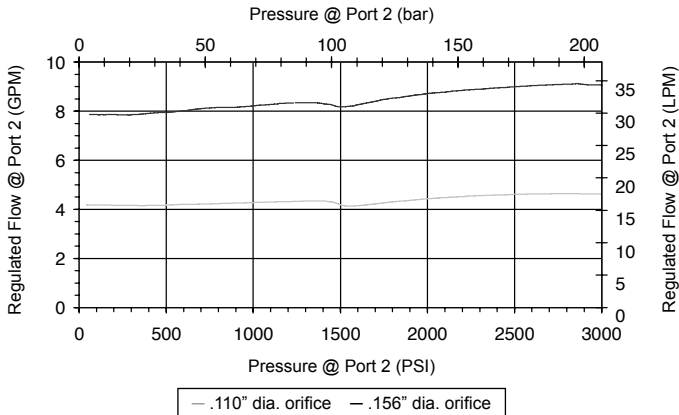
PERFORMANCE

Actual Test Data (Cartridge Only)

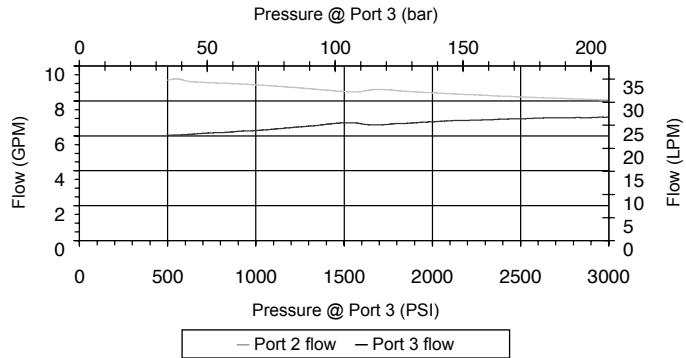
VALVE SPECIFICATIONS

| | |
|---|----------------------------------|
| Nominal Flow | 10 GPM (38 LPM) |
| Rated Operating Pressure | 3500 PSI (241 bar) |
| Typical Internal Leakage (150 SSU) | 5 cu in/min (82 ml/min) per path |
| Viscosity Range | 36 to 3000 SSU (3 to 647 cSt) |
| Filtration | ISO 18/16/13 |
| Media Operating Temp. Range | -40° to 250°F (-40° to 120°C) |
| Weight | .38 lbs (.17 kg) |
| Operating Fluid Media | General Purpose Hydraulic Fluid |
| Cartridge Torque Requirements | 30 ft-lbs (40.6 Nm) |
| Cavity | DELTA 4W |
| Cavity Tools Kit (form tool, reamer, tap) | 40500002 |
| Seal Kit | 21191214 |

10 GPM supply flow, .110" orifice, 150 PSI spring - 15 GPM supply flow, .156" orifice, 150 PSI spring - 1500 PSI load on port 3



Priority port 2 load: 1500 - 1700 PSI, .156" dia orifice, 15 GPM supply not intended for differential pressure > 1500 PSI port 4 to port 3



WARNING: the specifications/application data shown in our catalogs and data sheets are intended only as a general guide for the product described (herein). Any specific application should not be undertaken without independent study, evaluation, and testing for suitability.



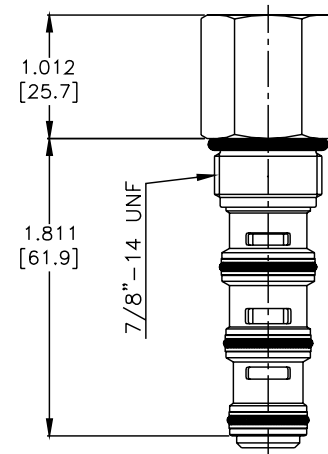
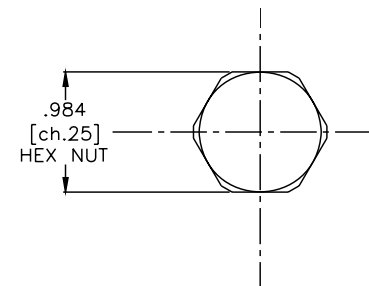
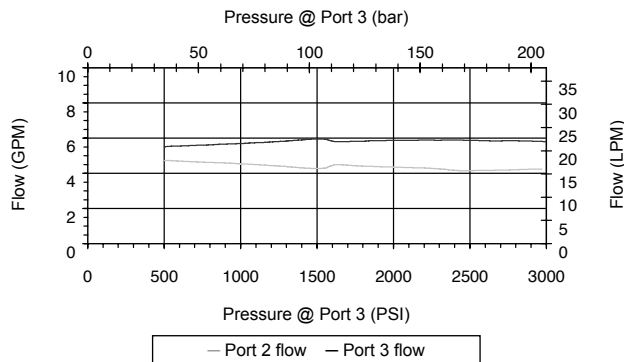
4484 Boeing Drive Rockford, IL 61109 • USA • Phone +1 (815) 397-6628 • Fax +1 (815) 397-2526
 mail: delta@delta-power.com • www.delta-power.com



Via Malavolti, 36 • 41122 Modena • ITALY • Phone +39 (059) 254895 • Fax +39 (059) 253512
 mail: tecnord@tecnord.com • www.tecnord.com

DIMENSIONS

Priority port 2 load: 1500 - 1700 PSI, .110" dia orifice, 10 GPM supply
not intended for differential pressure > 1500 PSI port 4 to port 3



(for bodies style and sizes see section "Accessories")

ORDERING INFORMATION

DG-TCB -

OPTIONS

- Buna Standard **00**
- Viton Standard **V0**

BODIES

- Blank** Without Body
- N** 3/8" BSP Ports
- S** #6 SAE Ports

PRESSURE SETTINGS

- 014** 14 bar (200 PSI)
- 020** 20 bar (285 PSI)
- 032** 32 bar (460 PSI)

Differential Pressure Across
External Controlling Orifice

W 40 / 2017

WARNING: the specifications/application data shown in our catalogs and data sheets are intended only as a general guide for the product described (herein). Any specific application should not be undertaken without independent study, evaluation, and testing for suitability.



4484 Boeing Drive Rockford, IL 61109 • USA • Phone +1 (815) 397-6628 • Fax +1 (815) 397-2526
mail: delta@delta-power.com • www.delta-power.com



Via Malavolti, 36 • 41122 Modena • ITALY • Phone +39 (059) 254895 • Fax +39 (059) 253512
mail: tecnord@tecnord.com • www.tecnord.com